



# DESIGN GUIDE

At Mattamy Homes, we offer a wide range of options to customize your new home. Add these items to your wishlist and discuss them with your Design Consultant at your Design Appointment.



# APPLIANCES

36" STAINLESS STEEL HOOD FAN - \$389  
in lieu of included 30" hood fan

OTR MICROWAVE HOOD FAN - \$816 + SEPERATE  
CIRCUIT OUTLET- \$290  
Not available in all communities

SHORTEN UPPERS TO ACCOMODATE FUTURE  
HOODFAN- Starting at \$200\*

DELETE UPPERS TO ACCOMODATE FUTURE CHIMNEY  
FAN- Starting at \$158\*

GLASS CHIMNEY HOOD FAN SS:  
30" Alito SCB50230 - Starting at \$2,177  
36" Alito SCB50230 - Starting at \$2,439  
550 CFM Cyclone

CHIMNEY HOOD FAN SS:  
30" Pro SCB72230 - Starting at \$1,765  
36" Pro SCB72230 - Starting at \$2,056  
650 CFM Cyclone

PRO COLLECTION - UNDERMOUNT SS:  
30" Pro PTB5630SS -Starting at \$2,080  
36" Pro PTB5630SS - Starting at \$2,342  
680 CFM Cyclone



OTR Microwave Hood Fan



Glass Chimney Hood Fan - ALITO SCB50230



Chimney Hood Fan - PRO SCB72230



Pro Collection Undermount - PTB5630SS

# BATHROOM FINISHES

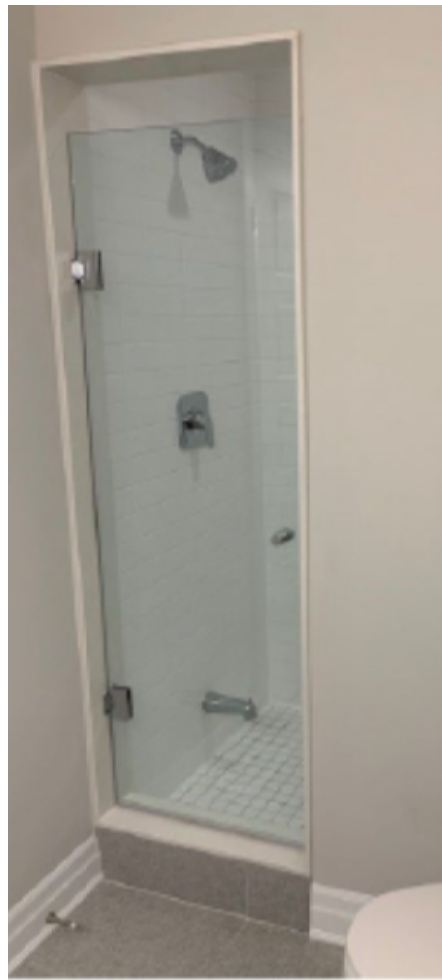
FRAMELESS GLASS SHOWER DOOR - \$1,447  
24"x72"

FRAMELESS GLASS TUB ENCLOSURE - \$1,989  
2 Panel Glass Slider

CONTEMPORARY 6" SQUARE HANDLE WITH MATCHING HINGES- \$316



Glass Tub Enclosure



Frameless Glass Shower Door

# PLUMBING - BATHROOM

STAND UP SHOWER WITH GLASS SLIDERS IN  
LIEU OF TUB- \$3,899

STAND UP SHOWER WITH FRAMELESS GLASS  
ENCLOSURE IN LIEU OF TUB-  
8' CEILING - \$3,808\*  
9' CEILING - \$3,958\*

## TOILETS:

CALI TOILET - \$955

KIERA TOILET - \$861

EGLINGTON TOILET - \$1,331

Moen eBidet - \$933

EB1000

\*Available in Primary Ensuite Only, separate circuit outlet required for  
this option



Cali Toilet



Eglington Toilet  
**Ellis Lane**



Kiera Toilet

# PLUMBING - BATHROOM

Sinks:

CALVIN UNDERMOUNT SINK- \$172

EMERY UNDERMOUNT SINK- \$263

ABBI ROUND VESSEL SINK - \$499

MADISON SEMI REC VESSEL SINK - \$534



Emery Sink



Abbi Sink



Madison Sink



Calvin Sink

# CABINETS - BATH



VANITY TO KITCHEN HEIGHT:

Up to 3' Vanity Length - \$334  
Over 3' Vanity Length - \$815



# CABINETS - KITCHEN



PROFESSIONAL RANGE TOP BASE - Starting at \$1,279\*

WASTE/RECYCLE BASE CABINET - \$850

PULL OUT SPICE RACK CABINET - \$1,120

FAUX DOORS - Contact your Design Consultant.\*

MINOR CABINET COLOUR CHANGE - \$471

MAJOR CABINET COLOUR CHANGE - \$1,177

STACKED UPPER CABINETS:

9' Ceilings - Starting at \$1,648\*

Priced per linear foot. Only where applicable.

HOOD CABINETS:

CONTEMPORARY HOOD CABINET - \$5,177

30" and 36"

DECOR HOOD CABINET - \$4,055

30" and 36"

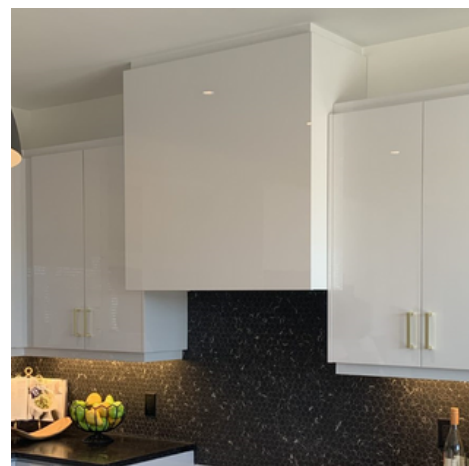
PREMIER HOOD CABINET - \$6,173

30" and 36"

SIGNATURE HOOD CABINET - Starting at \$6,878\*

30" and 36"

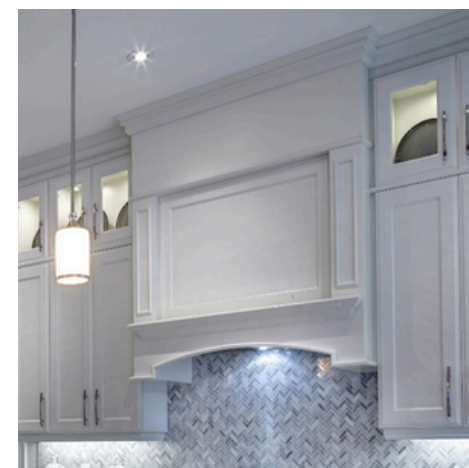
All prices are starting at. Please ask your consultant for more details



Contemporary Hood Cabinet



Decor Hood Cabinet



Premier Hood Cabinet (arched)



Signature Hood Cabinet



Waste/Recycle Base Cabinet and Pull Out Spice Rack

# FIREPLACE

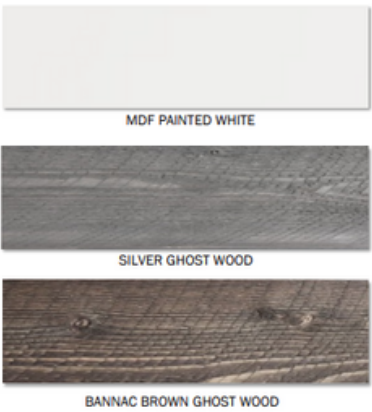
ER-C MDF FIREPLACE MANTLE:  
35" - \$285

ER-15 MDF FIREPLACE MANTLE:  
35" - \$400

FLOATING SHELF MDF BEAM - Starting at \$218\*

TILE VENEER FACING - Contact your Design Consultant.\*

DEKTON - Contact your Design Consultant.\*



Tile Veneer



ER-C MDF Fireplace Mantle



ER-15 MDF Fireplace Mantle

# ELECTRICAL

CAPPED ELECTRICAL CEILING BOX:

- On existing switch - \$127
- With separate switch - \$208
- With separate switch & circuit - \$443

WALL MOUNTED TV (FRAMING & CONDUIT) -\$335

CAT-6 OUTLET - \$236

KITCHEN RECEPTACLE (on separate circuit):

- 20AMP (120/240V) - \$487
- 40AMP (120/240V) - \$886
- 60AMP (120/240V) - \$1,176
- 60AMP (in lieu of 40AMP) - \$507

GARAGE RECEPTACLE (on separate circuit):

- 40AMP (120/240V) - \$936
- 60AMP (120/240V) - \$1,176

ELECTRICAL OUTLET - Starting at \$127\*

Location specific.

SCREWLESS WALL PLATES - Starting at \$642\*

DIMMER SWITCH - Starting at \$258\*



Capped Electrical Ceiling Box



Screwless Wall Plates and Dimmer Switch



Wall Mounted TV Framing (With Conduit)

# ELECTRICAL - LIGHTING

EXTERIOR LIGHT:

ADD COACH LIGHT (on existing switch) - \$254

ADD SIDE/REAR LIGHT (on existing switch) - \$226

INTERIOR LIGHT FIXTURE - Starting at \$223\*

REINFORCE HEAVY LIGHT FIXTURE - \$82

2" LED PUCK LIGHT (no switch) - \$243

4" LED POT LIGHT:

EXTERIOR - \$393\*

GROUND FLOOR (with living space above) - \$283\*

GROUND FLOOR (with no living space above) - \$326\*

SECOND FLOOR - \$326\*

TUB/SHOWER (with switch) - \$456\*

\*Priced per pot light

VALANCE LIGHT ROUGH-IN - \$409



Exterior Pot Lights



Interior Pot Lights



Valance Lighting



2" LED Puck Light

# GARAGE

GARAGE DOOR OPENER PACKAGE:  
Ceiling Mount - \$968

# HVAC

ADDITIONAL GAS ROUGH-IN:

Ground Floor - \$986

Second Floor - \$1,375

Third Floor - \$1,500

Future BBQ - \$678

POWER MIST HUMIDIFIER - \$1,250

AIR SOURCE HEAT PUMP- Starting at \$5932

INCREASE GAS LINE - \$633

1" to 1-1/4" - over 3 gas appliances.

FROST FREE HOSE BIB (in lieu of standard)-\$121

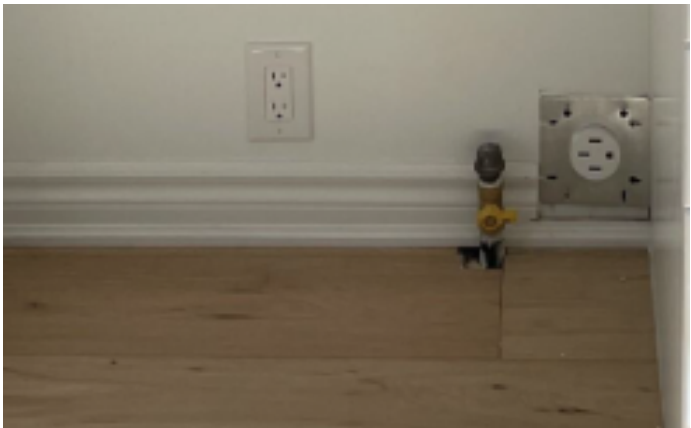
FROST FREE HOT WATER HOSE BIB- \$315



Ceiling Mount Garage Door Opener



Power Mist Humidifier



Gas Line



Frost Free Hose Bib

# MILLWORK - DOORS

SAFE & SOUND INTERIOR DOOR:

80" SINGLE DOOR - \$266

96" SINGLE DOOR - \$295

INTERIOR DOOR:

80"/96" RIVERSIDE/CARRARA (whole house) - \$266

96" LINCOLN/LOGAN (per door) - \$266

FRENCH DOOR IN LIEU OF INCLUDED DOOR-

Starting at \$675

INTERIOR DOOR HARDWARE:

CAMBIE KNOB - Starting at \$44\*

HALIFAX SQUARE LEVER - Starting at \$55\*

MILAN ROUND LEVER - Starting at \$55\*

Priced per door.

INTERIOR DOOR PRIVACY LOCK - \$25

Per door



Cambie Knob



Milan Round Lever



Halifax Square Lever



Pivacy Lock (Halifax Lever)



Riverside



Carrara



Lincoln



Logan

# MILLWORK - CLOSETS

FRAMED MIRROR SLIDERS - Starting at \$239\*

FRAMELESS MIRROR SLIDERS - Starting at \$489\*

BOARD SLIDERS or MIRRORED SLIDERS TO SWING DOORS

80" Doors - \$963\*

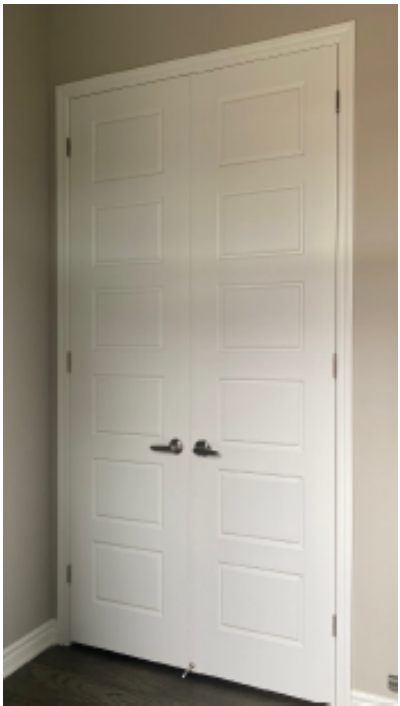
96" Doors- \$1725



Framed Mirror Sliders



Frameless Mirror Sliders



Double Swing Doors (will match selected interior door style)

# MILLWORK - TRIM

STEP TRIM PACKAGE:

2-3/4"x5-1/4" - Starting at \$2,613\*

2-3/4"x7-1/4" - Starting at \$2,763\*

CHAMFERED TRIM PACKAGE:

3-1/2"x5-1/4" - Starting at \$3,535\*

3-1/2"x7-1/4" - Starting at \$5,072\*

NOTCHED TRIM PACKAGE:

3-1/2"x5" - Starting at \$3,135\*

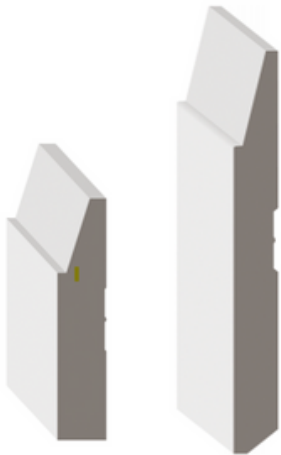
3-1/2"x7-1/4" - Starting at \$4,296\*

SHIPLAP BOARD - Starting at \$210\*

\*Per linear foot.



Step



Chamfered



Notched



Shiplap Board

# PAINT & DRYWALL

PAINT UPGRADE PACKAGE 1:  
Ground/Main & Upper Hall Only- Starting at \$1,776\*

PAINT UPGRADE PACKAGE 2:  
Upper Level Only -Starting at \$1,461\*

PAINT UPGRADE PACKAGE 3:  
Whole House -Starting at \$2,320\*

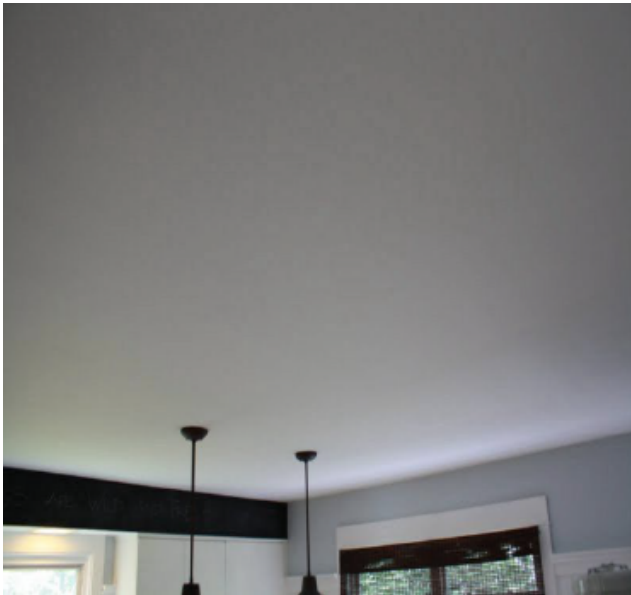
PAINT UPGRADE PACKAGE 4:  
Per Room -\$512  
Must be combined with Paint Package 1 or Paint Package 2.

SMOOTH CEILINGS:  
GROUND FLOOR -Starting at \$1,709\*  
SECOND FLOOR - Starting at \$3,571\*

HIGH REFLECTIVE WHITE SW7757
FLEUR DE SEL SW 7666
FROSTY WHITE SW 6196
CREAMY SW 7012
SHOJI WHITE SW 7042
ZURICH WHITE SW 7626
DRIFT OF MIST SW 9166



Stipple Ceiling (included)



Smooth Ceiling

# PLUMBING - KITCHEN

## KITCHEN SINKS:

Brookmore U1 #BSU1832-9- \$647

Brookmore U2 #BDU1831-9 - \$703

Brookmore U1.75 #BCU1835R-9- \$884

Franke Maris U1- \$844

Franke Maris U2- \$590

Available in Black, Grey and White

COLD WATER LINE - \$339\*

Specific appliance.

INSTANT HOT WATER:

CHROME - \$2,056

UPGRADED FINISH - \$2,206

SOAP DISPENSER - Starting at \$270\*



Brookmore U1 #BSU1832-9



Brookmore U2 #BDU1831-9



Brookmore U1.75 #BCU1835R-9

*Please consult Agreement of Purchase and Sale - Schedule A for confirmation of exact standard product/s specified for your home.*

# STAIRS/RAILINGS

POSTS:

Paris Post 4"x4" with 5" base- \$791

Victorian Non-Chamfered Post 4"x4" with 5" base- \$633



PARIS  
4"x4" with 5" base



VICTORIAN  
Non-Chamfered  
4"x4" with 5" base