



# DESIGN GUIDE

At Mattamy Homes, we offer a wide range of options to customize your new home. Add these items to your wishlist and discuss them with your Design Consultant at your Design Appointment.



# APPLIANCES

36" STAINLESS STEEL HOOD FAN - \$389  
in lieu of included 30" hood fan

OTR MICROWAVE HOOD FAN - \$816 + SEPERATE  
CIRCUIT OUTLET- \$290  
Not available in all communities

SHORTEN UPPERS TO ACCOMODATE FUTURE  
HOODFAN- Starting at \$200\*

DELETE UPPERS TO ACCOMODATE FUTURE CHIMNEY  
FAN- Starting at \$158\*

GLASS CHIMNEY HOOD FAN SS:  
30" Alito SCB50230 - Starting at \$2,177  
36" Alito SCB50230 - Starting at \$2,439  
550 CFM Cyclone

CHIMNEY HOOD FAN SS:  
30" Pro SCB72230 - Starting at \$1,765  
36" Pro SCB72230 - Starting at \$2,056  
650 CFM Cyclone

PRO COLLECTION - UNDERMOUNT SS:  
30" Pro PTB5630SS -Starting at \$2,080  
36" Pro PTB5630SS - Starting at \$2,342  
680 CFM Cyclone



OTR Microwave Hood Fan



Glass Chimney Hood Fan - ALITO SCB50230



Chimney Hood Fan - PRO SCB72230



Pro Collection Undermount - PTB5630SS

# BATHROOM FINISHES

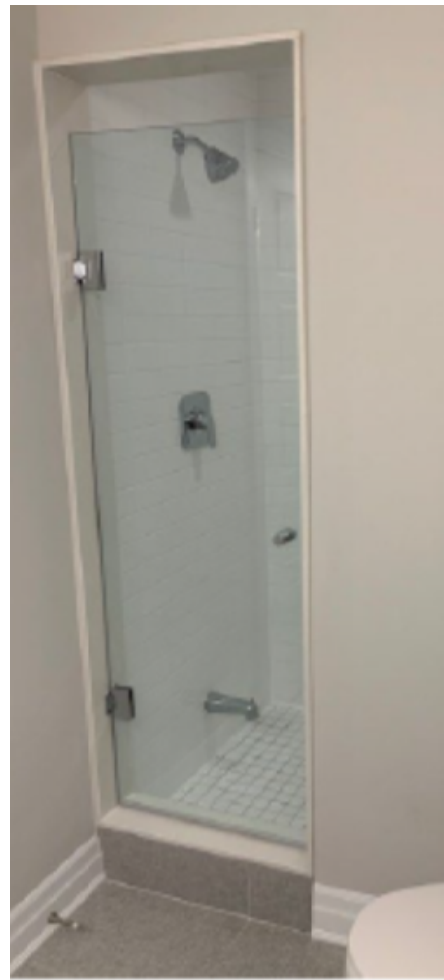
FRAMELESS GLASS SHOWER DOOR - \$1,447  
24"x72"

FRAMELESS GLASS TUB ENCLOSURE - \$1,989  
2 Panel Glass Slider

CONTEMPORARY 6" SQUARE HANDLE WITH MATCHING HINGES- \$316



Glass Tub Enclosure



Frameless Glass Shower Door

# PLUMBING - BATHROOM

STAND UP SHOWER WITH GLASS SLIDERS IN LIEU OF TUB- \$3,899

STAND UP SHOWER WITH FRAMELESS GLASS ENCLOSURE IN LIEU OF TUB-

8' CEILING - \$3,808\*

9' CEILING - \$3,958\*

## TOILETS:

CALI TOILET - \$955

KIERA TOILET - \$861

EGLINGTON TOILET - \$1,331

Moen eBidet - \$933

EB1000

\*Available in Primary Ensuite Only, separate circuit outlet required for this option



Cali Toilet



Eglington Toilet  
Ellis Lane



Kiera Toilet

# PLUMBING - BATHROOM

## Sinks:

CALVIN UNDERMOUNT SINK- \$172

EMERY UNDERMOUNT SINK- \$263

ABBI ROUND VESSEL SINK - \$499

MADISON SEMI REC VESSEL SINK - \$534



Emery Sink



Abbi Sink



Madison Sink



Calvin Sink

# CABINETS - BATH

KitchenCraft  
CABINETS

VANITY TO KITCHEN HEIGHT:

Up to 3' Vanity Length - \*\$115

Over 3' Vanity Length - \*\$460



# CABINETS - KITCHEN



PROFESSIONAL RANGE TOP BASE - Starting at \$1,210\*

4 BIN WASTE/RECYCLE BASE CABINET - Starting at \$1,762\*

PULL OUT SPICE RACK CABINET - \$1,307

FAUX DOORS - Contact your Design Consultant.\*

MINOR CABINET COLOUR CHANGE - \$471

MAJOR CABINET COLOUR CHANGE - \$1,177

STACKED UPPER CABINETS:  
9' Ceilings - Starting at \$976\*  
Priced per linear foot. Only where applicable.

HOOD CABINETS:  
CONTEMPORARY HOOD CABINET - Contact your Design Consultant.\*  
30" and 36"  
DECORTAPERED HOOD CABINET - Contact your Design Consultant.\*  
30" and 36"

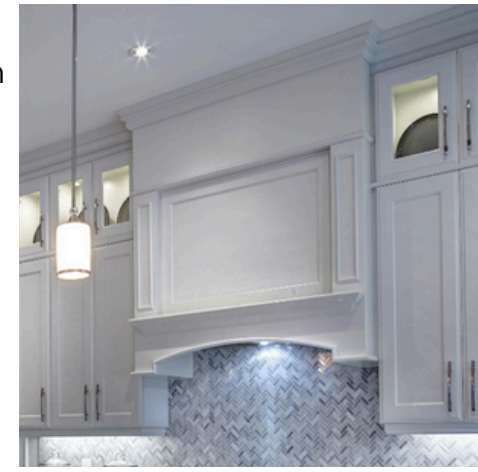
All prices are starting at. Please ask your consultant for more details



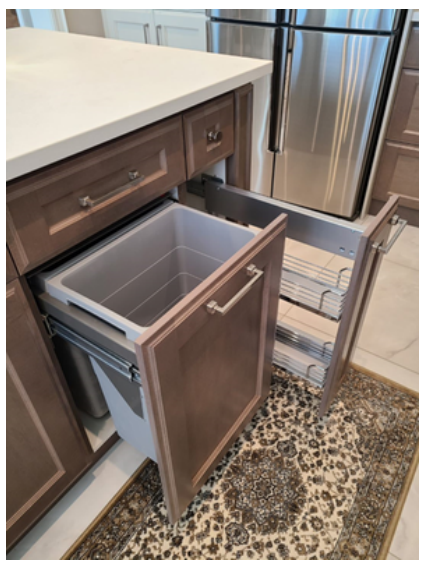
Contemporary Hood Cabinet



Decor Hood Cabinet



Premier Hood Cabinet (arched)



Waste/Recycle Base Cabinet and Pull Out Spice Rack



Signature Hood Cabinet

# FIREPLACE

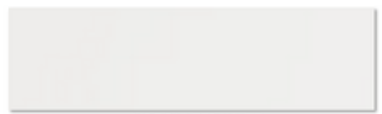
ER-C MDF FIREPLACE MANTLE:  
35" - \$285

ER-15 MDF FIREPLACE MANTLE:  
35" - \$400

FLOATING SHELF MDF BEAM - Starting at \$218\*

TILE VENEER FACING - Contact your Design Consultant.\*

DEKTON - Contact your Design Consultant.\*



MDF PAINTED WHITE



SILVER GHOST WOOD



BANNAC BROWN GHOST WOOD



Tile Veneer



ER-C MDF Fireplace Mantle



ER-15 MDF Fireplace Mantle



# ELECTRICAL

## CAPPED ELECTRICAL CEILING BOX:

- On existing switch - \$127
- With separate switch - \$208
- With separate switch & circuit - \$443

## WALL MOUNTED TV (FRAMING & CONDUIT) -\$335

## CAT-6 OUTLET - \$236

## KITCHEN RECEPTACLE (on separate circuit):

- 20AMP (120/240V) - \$487
- 40AMP (120/240V) - \$886
- 60AMP (120/240V) - \$1,176
- 60AMP (in lieu of 40AMP) - \$507

## GARAGE RECEPTACLE (on separate circuit):

- 40AMP (120/240V) - \$936
- 60AMP (120/240V) - \$1,176

## ELECTRICAL OUTLET - Starting at \$127\*

Location specific.

## SCREWLESS WALL PLATES - Starting at \$642\*

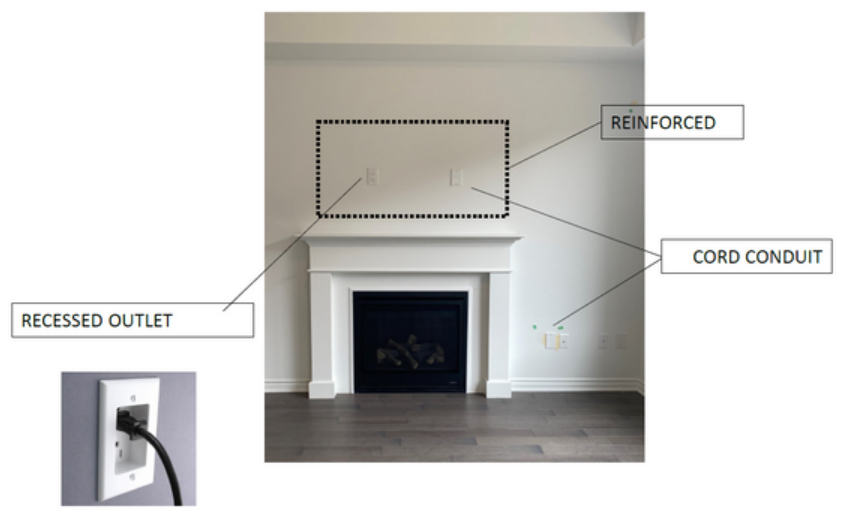
## DIMMER SWITCH - Starting at \$258\*



Capped Electrical Ceiling Box



Screwless Wall Plates and Dimmer Switch



Wall Mounted TV Framing (With Conduit)

# ELECTRICAL - LIGHTING

### EXTERIOR LIGHT:

- ADD COACH LIGHT (on existing switch) - \$254
- ADD SIDE/REAR LIGHT (on existing switch) - \$226

INTERIOR LIGHT FIXTURE - Starting at \$223\*

REINFORCE HEAVY LIGHT FIXTURE - \$82

2" LED PUCK LIGHT (no switch) - \$243

### 4" LED POT LIGHT:

- EXTERIOR - \$393\*
- GROUND FLOOR (with living space above) - \$283\*
- GROUND FLOOR (with no living space above) - \$326\*
- SECOND FLOOR - \$326\*
- TUB/SHOWER (with switch) - \$456\*

\*Priced per pot light

VALANCE LIGHT ROUGH-IN - \$409



Exterior Pot Lights



Interior Pot Lights



Valance Lighting



2" LED Puck Light

# GARAGE

GARAGE DOOR OPENER PACKAGE:  
Ceiling Mount - \$968



Ceiling Mount Garage Door Opener

# HVAC

ADDITIONAL GAS ROUGH-IN:

Ground Floor - \$986

Second Floor - \$1,375

Third Floor - \$1,500

Future BBQ - \$678

POWER MIST HUMIDIFIER - \$1,250

AIR SOURCE HEAT PUMP- Starting at \$5932

INCREASE GAS LINE - \$633

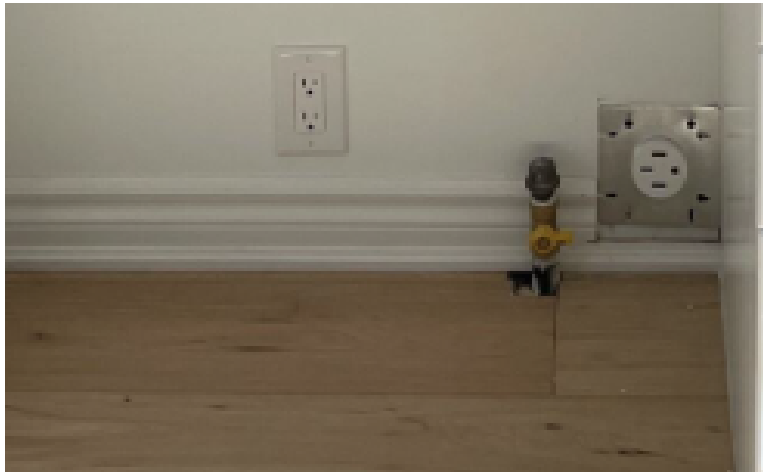
1" to 1-1/4" - over 3 gas appliances.

FROST FREE HOSE BIB (in lieu of standard)-\$121

FROST FREE HOT WATER HOSE BIB- \$315



Power Mist Humidifier



Gas Line



Frost Free Hose Bib

# MILLWORK - DOORS

SAFE & SOUND INTERIOR DOOR:

80" SINGLE DOOR - \$266

96" SINGLE DOOR - \$295

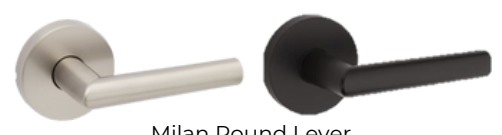


Cambie Knob

INTERIOR DOOR:

80"/96" RIVERSIDE/CARRARA (whole house) - \$266

96" LINCOLN/LOGAN (per door) - \$266



Milan Round Lever

FRENCH DOOR IN LIEU OF INCLUDED DOOR-

Starting at \$675

INTERIOR DOOR HARDWARE:

CAMBIE KNOB - Starting at \$44\*

HALIFAX SQUARE LEVER - Starting at \$55\*

MILAN ROUND LEVER - Starting at \$55\*

Priced per door.



Halifax Square Lever

INTERIOR DOOR PRIVACY LOCK - \$25

Per door



Privacy Lock (Halifax Lever)



Riverside



Carrara



Lincoln



Logan

# MILLWORK - CLOSETS

FRAMED MIRROR SLIDERS - Starting at \$239\*

FRAMELESS MIRROR SLIDERS - Starting at \$489\*

BOARD SLIDERS or MIRRORED SLIDERS TO SWING DOORS

80" Doors - \$963\*

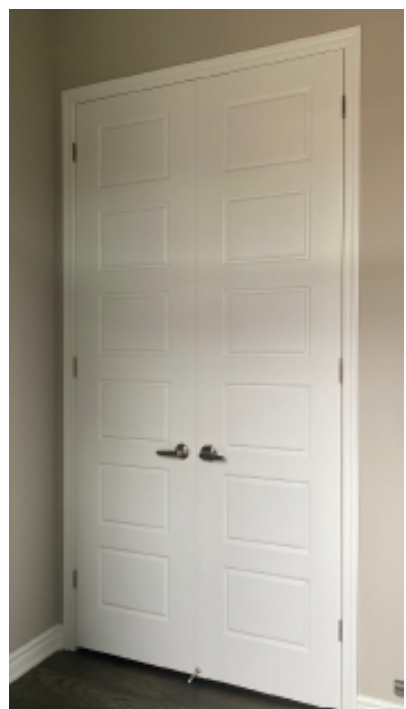
96" Doors- \$1725



Framed Mirror Sliders



Frameless Mirror Sliders



Double Swing Doors (will match selected interior door style)

# MILLWORK - TRIM

**STEP TRIM PACKAGE:**

2-3/4"x5-1/4" - Starting at \$2,613\*

2-3/4"x7-1/4" - Starting at \$2,763\*

**CHAMFERED TRIM PACKAGE:**

3-1/2"x5-1/4" - Starting at \$3,535\*

3-1/2"x7-1/4" - Starting at \$5,072\*

**NOTCHED TRIM PACKAGE:**

3-1/2"x5" - Starting at \$3,135\*

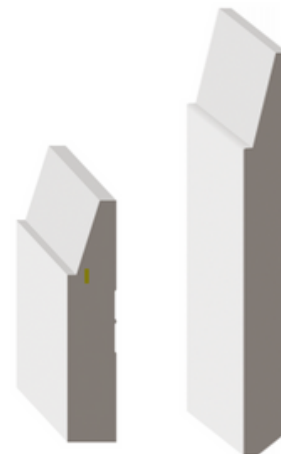
3-1/2"x7-1/4" - Starting at \$4,296\*

**SHIPLAP BOARD - Starting at \$210\***

\*Per linear foot.



Step



Chamfered



Notched



Shiplap Board

# PAINT & DRYWALL

PAINT UPGRADE PACKAGE 1:  
Ground/Main & Upper Hall Only- Starting at \$1,776\*

PAINT UPGRADE PACKAGE 2:  
Upper Level Only -Starting at \$1,461\*

PAINT UPGRADE PACKAGE 3:  
Whole House -Starting at \$2,320\*

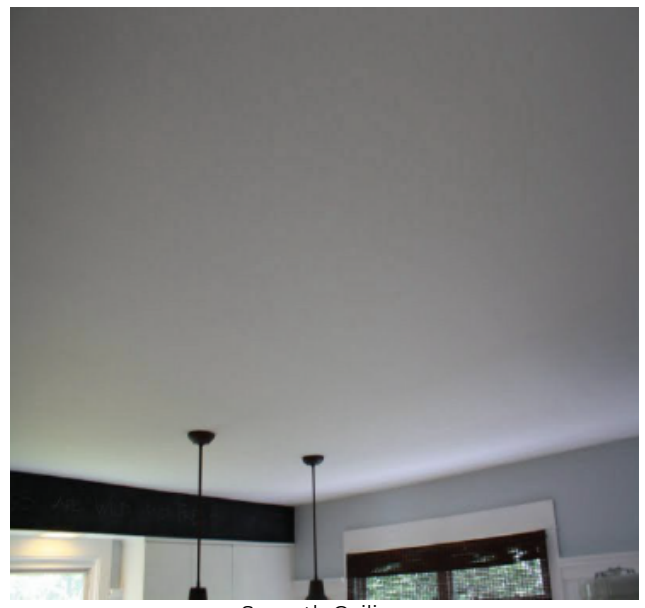
PAINT UPGRADE PACKAGE 4:  
Per Room -\$512  
Must be combined with Paint Package 1 or Paint Package 2.

SMOOTH CEILINGS:  
GROUND FLOOR -Starting at \$1,709\*  
SECOND FLOOR - Starting at \$3,571\*

- HIGH REFLECTIVE WHITE SW7757
- FLEUR DE SEL SW 7666
- FROSTY WHITE SW 6196
- CREAMY SW 7012
- SHOJI WHITE SW 7042
- ZURICH WHITE SW 7626
- DRIFT OF MIST SW 9166



Stipple Ceiling (included)



Smooth Ceiling

# PLUMBING - KITCHEN

### KITCHEN SINKS:

- Brookmore U1 #BSU1832-9- \$647
- Brookmore U2 #BDU1831-9 - \$703
- Brookmore U1.75 #BCU1835R-9- \$884

- Franke Maris U1- \$844
- Franke Maris U2- \$590
- Available in Black, Grey and White

COLD WATER LINE - \$339\*  
Specific appliance.

- INSTANT HOT WATER:
- CHROME - \$2,056
- UPGRADED FINISH - \$2,206

SOAP DISPENSER - Starting at \$270\*



Brookmore U1 #BSU1832-9



Brookmore U2 #BDU1831-9



Brookmore U1.75 #BCU1835R-9

*Please consult Agreement of Purchase and Sale - Schedule A for confirmation of exact standard product/s specified for your home.*



# STAIRS/RAILINGS

## POSTS:

Paris Post 4"x4" with 5" base- \$791

Victorian Non-Chamfered Post 4"x4" with 5" base- \$633



PARIS  
4"x4" with 5" base



VICTORIAN  
Non-Chamfered  
4"x4" with 5" base